



THERE'S NO PLACE LIKE PENTA

PENTAHOTEL BRUSSELS CITY CENTRE

Our Brussels City Centre location, situated on Avenue Louise is the epitome of the neighbourhood hotel. Stylish and comfortable, we sit within walking distance of the city's bars and restaurants. Ideal for a spot of shopping or a tour of the best nightlife Brussels has to offer. Head back to the Pentalounge to enjoy a nightcap and recap, before bed.

PENTAHOTEL BRUSSELS CITY CENTRE

Chaussée de Charleroi 38, 1060 Brussels, Belgium
T: +32 (0)25336666
info.brussels.center@pentahotels.com

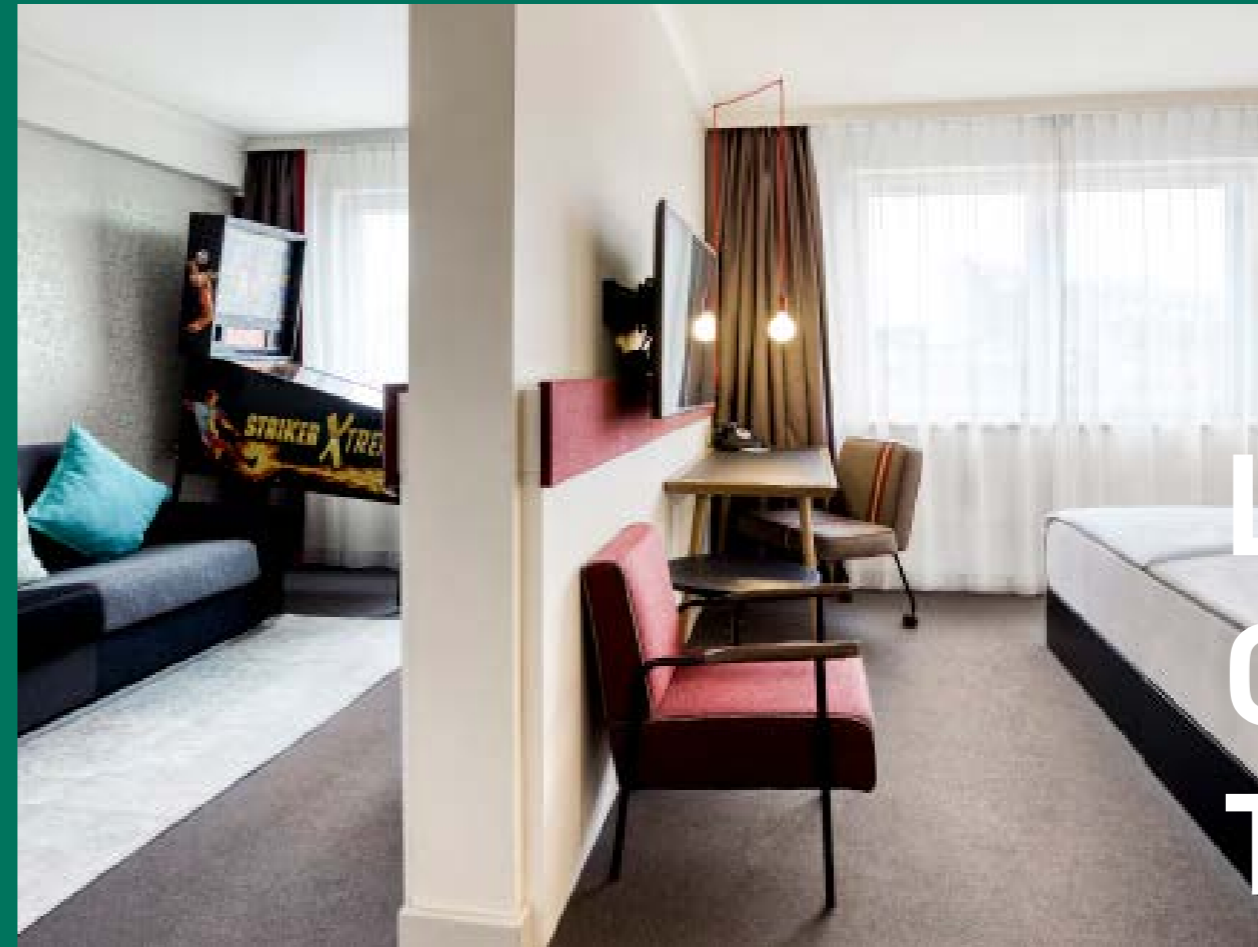
**PENTA
HOTEL**
BRUSSELS
CITY CENTRE



MAKE ROOM FOR YOU

Whatever the reason for your visit, we create a sacred space just for you. Each room is spacious, non-smoking and stocked with luxurious bathroom amenities and hair dryers. There's free and fast access to Wifi, meaning you can stay connected while on the road. Whether you're here for business or pleasure, we'll make sure you're rested and restored for what lies ahead. Starting with the (far-from-standard) standard double rooms, there are several Penta formats to choose from and they all offer something special.

- complimentary bottle of water
- sustainable amenities by Zenology
- premium rain shower head
- larger-than-life beds
- stringent cleaning procedures
- 1 click free Wi-Fi



PENTA PLAYER SUITE

- City Centre 2 km
- Brussels Airport (BRU) 15 km
- Brussels Midi/SouthTrain Station 3 km
- Louise Metro Station 0.5 km
- Convention Centre 2 km
- 202 rooms | 9 meeting rooms
- Best group size up to 100 guests
- Hybrid event options available
- 40 paid parking spaces available
- Pentalounge open 24h
- Gym open 24h
- Billiards in the lounge

LET'S GET DOWN TO BASICS

PENTA STANDARD ROOM



PENTA PLUS ROOM



PENTA JUNIOR SUITE



WANT A MEETING IN STYLE?

The historic centre of Brussels is the perfect place to host a small get together or meeting for up to 120 people. Penta has nine event rooms, each one fitted with all the tech you need, AC and natural daylight. Plus, we have the capabilities for hybrid meetings with any number of virtual attendees. We'll be on hand to style the room to meet your needs. Alongside this, you'll find an interpreters' room, break out area and a think tank for ideation and creation. We're not far from great stores, and the transport links are easily accessible. There is public parking next door with direct access to the hotel.



HUNGRY FOR LIFE

If you like it fresh and local, you will love our menu. So whether you are one of our neighbours and your fridge is empty, or one of our guests looking for a midnight snack – pop by and let the good times roll.



WHAT'S PENTA?

We started life in 1971 with a single vision: to combine style, substance and comfort to create a hotel like no other. Fifty years later, we now have over 20 hotels under the Penta brand across Europe and Asia. Our spaces are more than a place to rest your head, they are an expression and celebration of the neighbourhoods they belong to. They offer contemporary explorers and business travellers a home away from home. At the heart of every location sits the Pentalounge - a bar, cafe and reception hybrid - a living room and a welcome to all.

Penta: Welcoming neighbours and explorers since 1971.



GET IN TOUCH

+32 (0)25336666

PENTAHOTEL BRUSSELS CITY CENTRE

Chaussée de Charleroi 38, 1060 Brussels, Belgium

T: +32 (0)25336666

info.brussels.center@pentahotels.com

**PENTA
HOTEL**
BRUSSELS
CITY CENTRE