



THERE'S NO PLACE LIKE PENTA

PENTAHOTEL LIÈGE

In the heart of the Burning City, you'll find a hotel designed with comfort and style in mind. Pentahotel Liège sits on the doorstep of the famous Carrè area, while our very own Pentalounge has become a destination in its own right. Known for its great food, chilled vibe and array of drinks, it's the perfect place to get together or simply unwind.

PENTAHOTEL LIÈGE

Boulevard de la Sauvenière 100, 4000 Liège, Belgium
T: +32 26203424
info.liege@pentahotels.com

**PENTA
HOTEL**
LIÈGE

PENTA JUNIOR SUIT

MAKE ROOM FOR YOU

Whatever the reason for your visit, we create a sacred space just for you. Each room is spacious, non-smoking and stocked with luxurious bathroom amenities and hair dryers. There's free and fast access to Wifi, meaning you can stay connected while on the road. Whether you're here for business or pleasure, we'll make sure you're rested and restored for what lies ahead. Starting with the (far-from-standard) standard double rooms, there are several Penta formats to choose from and many of our hotels offer something extra, like our Studio Apartments.

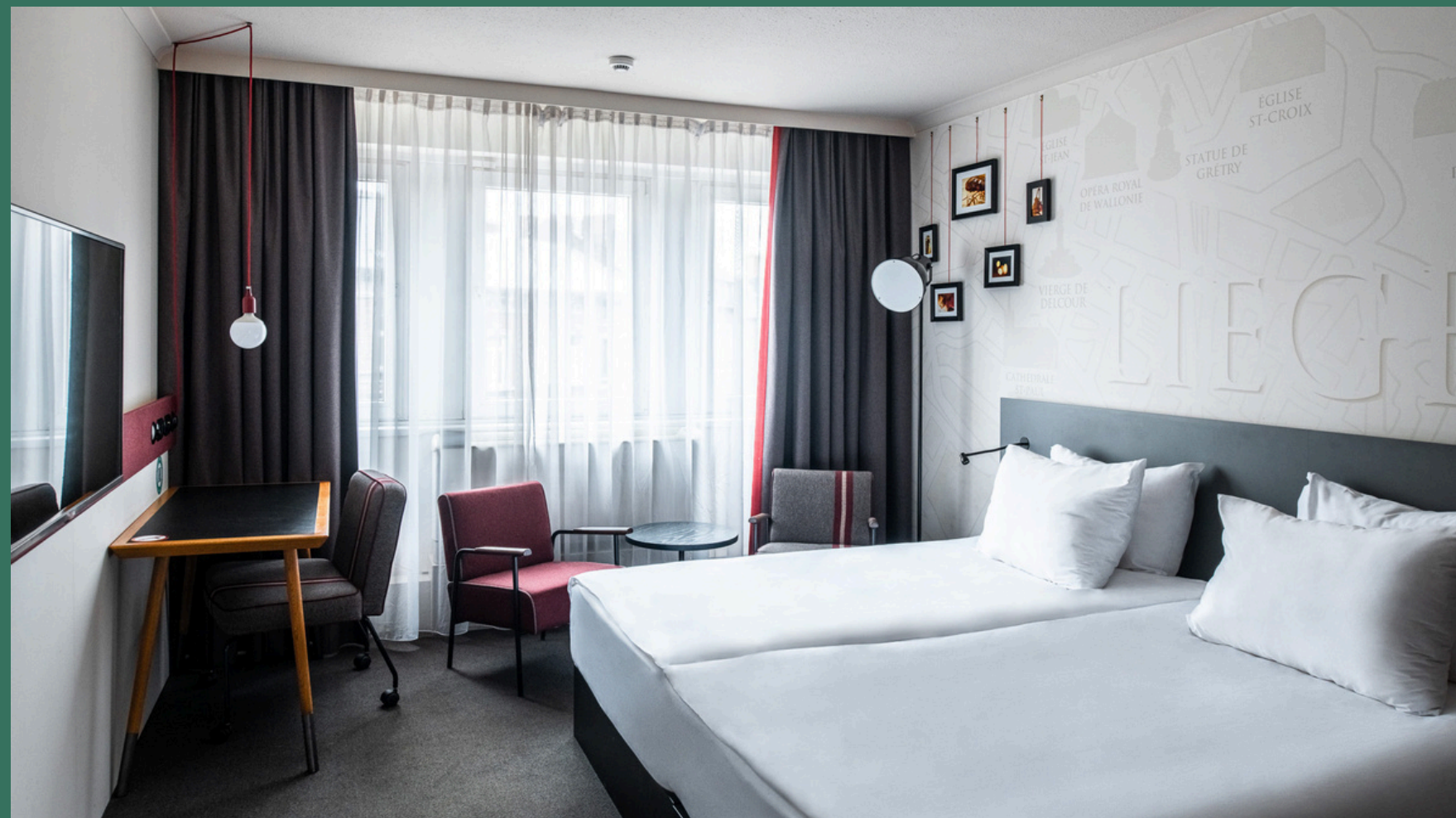
- Complimentary bottle of water
- Sustainable amenities by Zenology
- Premium rain shower head
- Larger-than-life beds
- Stringent cleaning procedures
- 1 click free Wi-Fi



LET'S GET DOWN TO BASICS

- City Centre 1 km
- Liège Airport (LGG) 11 km
- Brussels South Charleroi Airport (CRL) 87 km
- Liège-Guillemins Station 2 km
- Convention Centre 2.5 km
- 105 rooms | 2 meeting rooms
- Best group size up to 70 guests
- 20 paid parking spaces available
- Pentalounge open 24h
- Gym open 24h
- Billiards & game console in the lounge

PENTA STANDARD ROOM

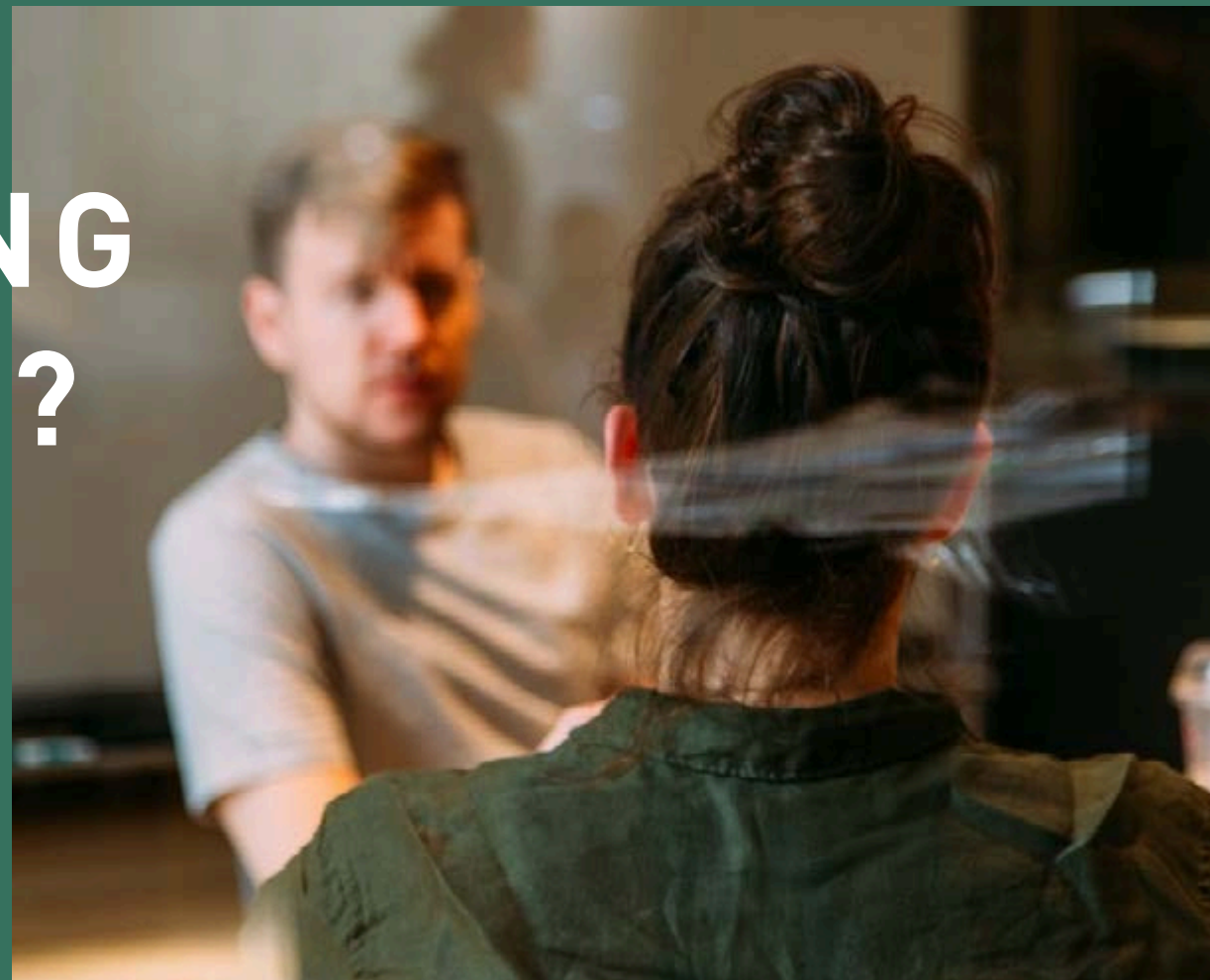


PENTA PLUS ROOM



WANT A MEETING IN STYLE?

Sitting at the heart of Liège, surrounded by shops and restaurants, Penta is the perfect place to meet. Our two event rooms can cater for 100 people, comfortably. They have AC to keep you cool and are situated on the ground floor next to the Pentalounge. Our reception area is close at hand, meaning the team are on hand to help with everything you need, from dinner reservations to team building activities.



HUNGRY FOR LIFE

If you like it fresh and local, you will love our menu. So whether you are one of our neighbours and your fridge is empty, or one of our guests looking for a midnight snack – pop by and let the good times roll.



WHAT'S PENTA?

We started life in 1971 with a single vision: to combine style, substance and comfort to create a hotel like no other. Our spaces are more than a place to rest your head, they are an expression and celebration of the neighbourhoods they belong to. At the heart of every location sits the Pentalounge - a bar, cafe and reception hybrid - a living room and a welcome to all.

Penta: Welcoming neighbours and explorers since 1971.



GET IN TOUCH

info.liege@pentahotels.com

+32 26203424



pentahotels.com

PENTAHOTEL LIÈGE

Boulevard de la Sauvenière 100, 4000 Liège, Belgium
T: +32 26203424
info.liege@pentahotels.com

**PENTA
HOTEL**
LIÈGE