

A hand holding a dart in front of a dartboard in a dimly lit bar. The hand is wearing a silver ring and a wide silver cuff bracelet. The background is dark with colorful bokeh lights.

# BUSINESS IS BETTER IN BREMEN

## PENTAHOTEL BREMEN

An ultra-modern hotel in a stylish neighbourhood: welcome to Pentahotel Bremen. The perfect place for your next event, we have space for intimate catchups or gatherings of up to 140 guests. With the latest tech and a passionate team, your event is in the best of hands. Plus, we have table tennis and darts in the breakout area so after you work hard you can play hard too. Give us a call and let's get planning.

## PENTAHOTEL BREMEN

August-Bebel-Allee 4, 28329 Bremen  
T: +49 421526340  
[sales.bremen@pentahotels.com](mailto:sales.bremen@pentahotels.com)

**PENTA  
HOTEL**  
BREMEN

# LET'S DO BUSINESS

It's our business to make your business offsite run perfectly. No other meeting has exactly your requirements, and no other venue will match them like Penta. We take it personally.

## DAY DELEGATE PACKAGE "PENTA"

- Meeting room hire
- Morning coffee break
- Quick-Lunch
- Afternoon coffee break
- Equipment (presenter's kit, flipchart, pinboard, screen, projector, notepads & pencils)
- Unlimited mineral water in the main meeting room and during lunch

## DAY DELEGATE PACKAGE "PENTA PLUS"

- Meeting room hire
- Morning coffee break
- 3 course lunch menu or lunch buffet\* with 3 main courses available
- Afternoon coffee break
- Equipment (LCD projector, laser pointer, conference kit, flipchart, pinboard, notepads & pencils, screen)
- Unlimited mineral water and fruit juices in the main meeting room and during lunch

# IN A NUTSHELL

- 148 rooms | 5 meeting rooms
- Newly renovated 2022
- Best on-site group size up to 140 guests
- 108 paid parking spaces available
- Pentalounge open 24h
- 1 click free Wi-Fi
- Gym open 6.00 - 23.00
- Billiards table in the lounge
- Table tennis and darts in the breakout area
- Various live sports broadcast on Sky/DAZN in the Pentalounge

# LOCATION

- City Centre 5 km
- Bremen Airport (BRE) 15 km
- Hannover Airport (HAJ) 109 km
- Hamburg Airport (HAM) 125 km
- Bremen Main Station 5.8 km
- Congress Centre Bremen (CCB) 5 km



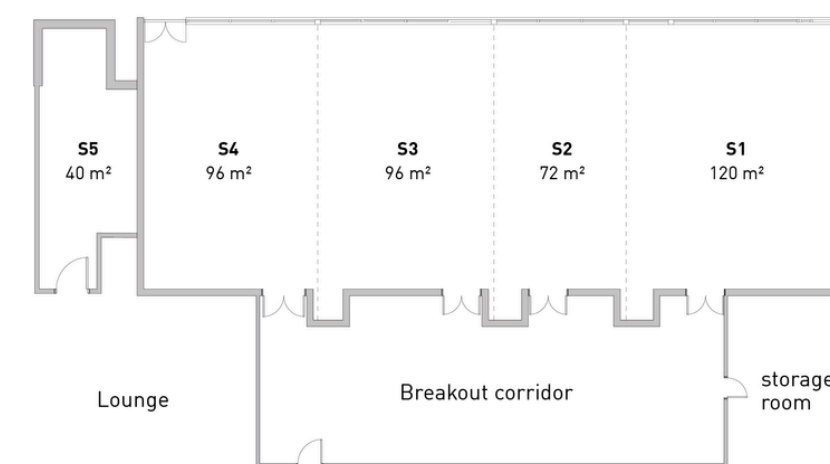
OF COURSE  
WE MAKE SURE  
IT'S YOUR  
PERFECT EVENT -  
IT'S OURS TOO.

## A MEETING OF MINDS

We make it our job, to help you do yours. Whatever your meeting requirements, the Penta team are here to ensure they're met. Whether you're gathering the team, hosting a conference or delivering an event, we'll work with you to make sure everything runs as it should. What matters to you, matters to us.

## ROOM AT THE TOP

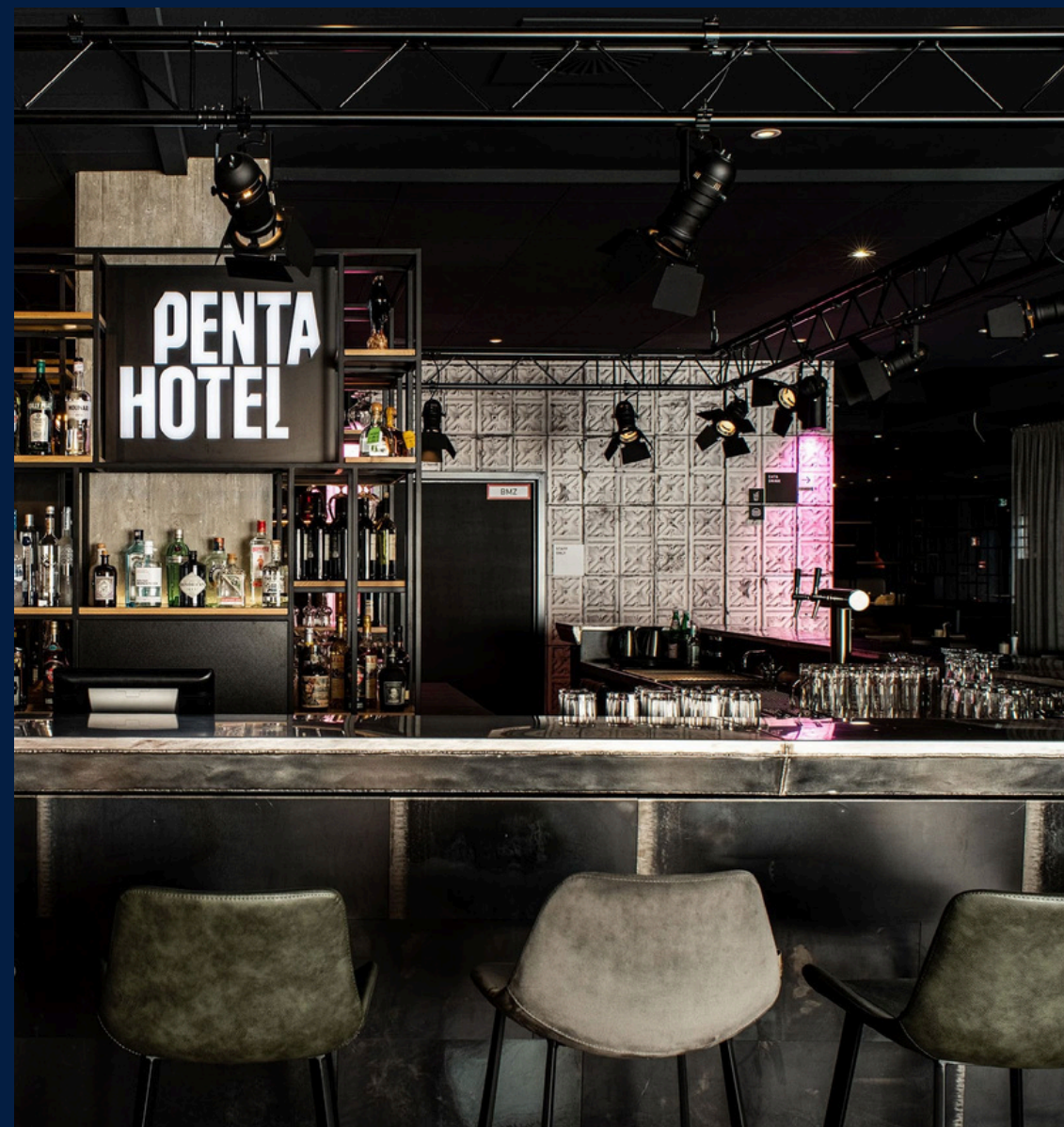
At the end of a day filled with interactions, retreat to your personal bubble. Your private little kingdom, stylishly designed to maximise your space. Featuring a large flatscreen, spacious desk and fast Wi-Fi. And most important: a big cosy bed.



	SIZE (m²)	U-SHAPE	BANQUET	THEATRE	CLASSROOM	BOARDROOM	RECEPTION
S1	120	35	50	90	60	30	80
S2	72	20	30	50	30	20	40
S3	96	30	40	80	50	30	60
S4	96	30	40	80	50	30	60
S1+2	192	55	80	140	90	50	
S1+2+3	288	85	120	220	140	80	
S1+2+3+4	384	115	160	300	190	110	
S5							

# DOWN TO DINE

Quality input means quality output, and what business runs on an empty stomach? We certainly don't. And what kind of food can you expect? We like to call it 'haute comfort cuisine'. That means, a mix of local classics and international favourites, done right: with fresh ingredients and lots of love.



# ALL WORK. ALL PLAY.

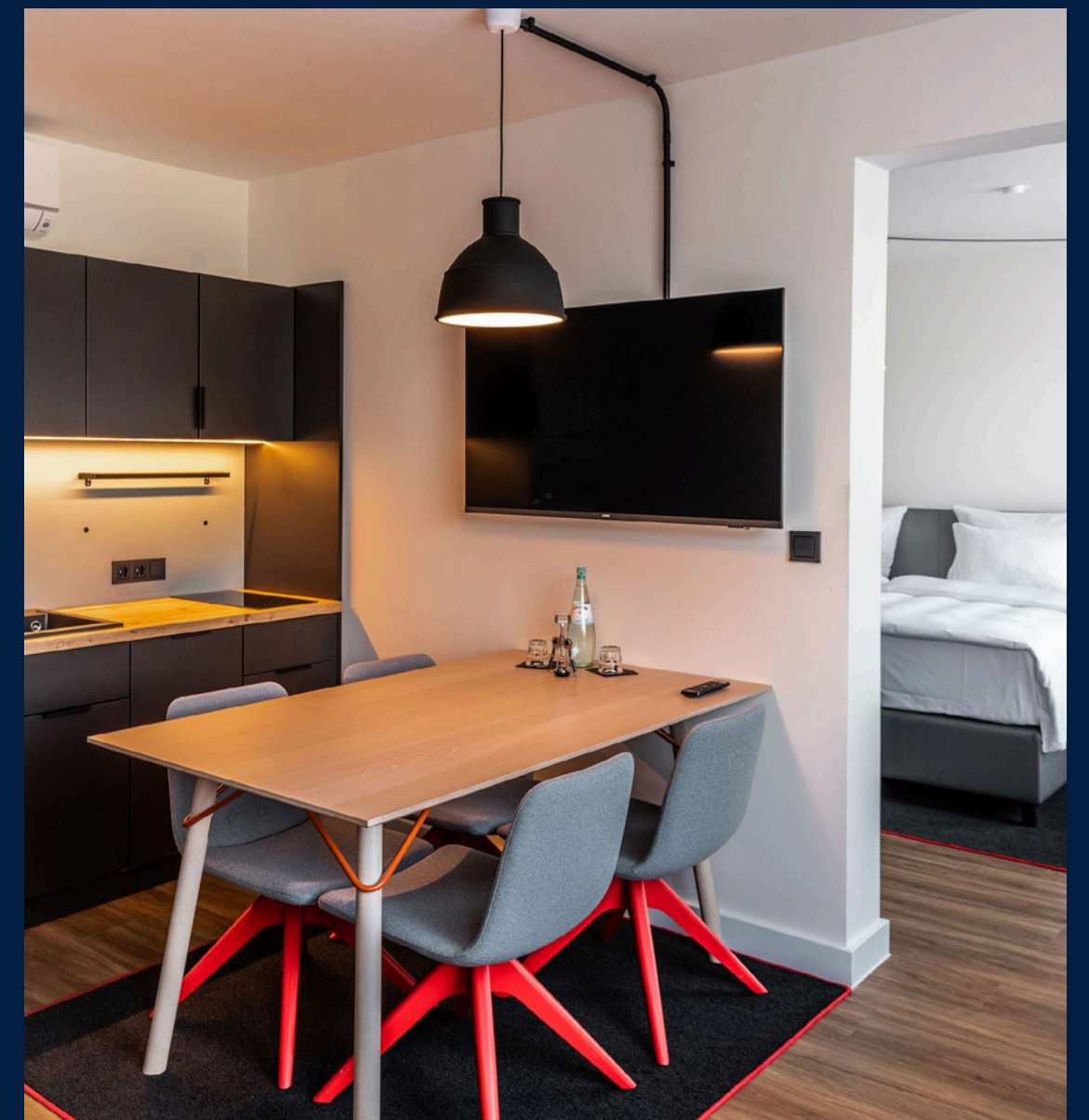
At the heart of every Penta sits the Pentalounge. Designed to reflect the many needs of our guests, the lounge can be made your own. Whether you're there to eat or drink, read and relax, or play and connect, the lounge caters to everyone.

# PENTA STUDIO APARTMENT

Let's get this thing cookin'

Plan on sticking around for a while? The secret ingredient to getting the most out of your extended stay is a place that feels like home. In these digs, style meets functionality to make your perfect home base for an extended stay. With a fully stocked kitchenette (fridge, dishwasher, hotplate... you name it, it's there), a foldout dining zone and all the tableware and cooking utensils you need, it really is the best thing since sliced bread. No more coming and going (only if you feel like it) and a safe space just for you.

Home sweet Penta.



# WHAT'S PENTA?

We started life in 1971 with a single vision: to combine style, substance and comfort to create a hotel like no other. Our spaces are more than a place to rest your head, they are an expression and celebration of the neighbourhoods they belong to. At the heart of every location sits the Pentalounge - a bar, cafe and reception hybrid - a living room and a welcome to all.

**Penta: Welcoming neighbours and explorers since 1971.**

[READ MORE](#)



[pentahotels.com](https://pentahotels.com)



# GET IN TOUCH

For a quote, email us at:

[sales.bremen@pentahotels.com](mailto:sales.bremen@pentahotels.com)

[events.bremen@pentahotels.com](mailto:events.bremen@pentahotels.com)

## PENTAHOTEL BREMEN

August-Bebel-Allee 4, 28329 Bremen  
T: +49 421526340  
[sales.bremen@pentahotels.com](mailto:sales.bremen@pentahotels.com)

**PENTA  
HOTEL  
BREMEN**